

Trane CCUD 209

Specifications

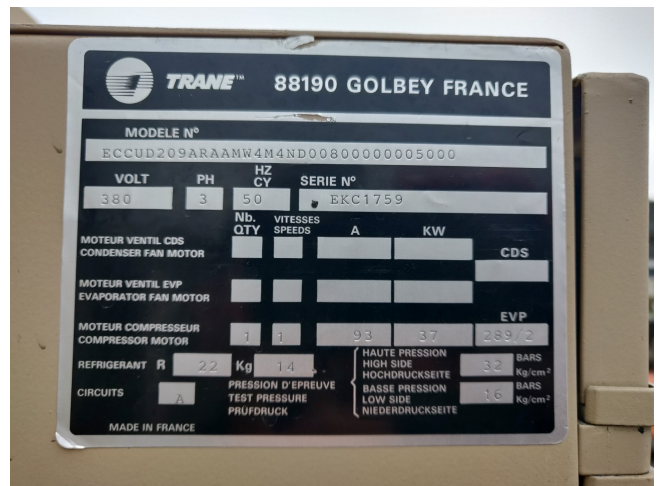
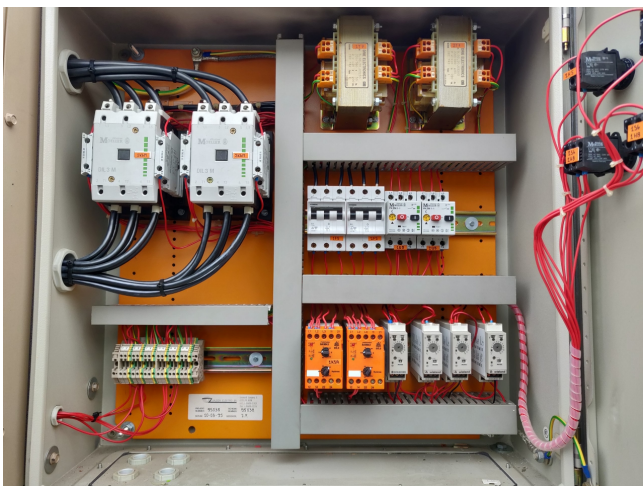
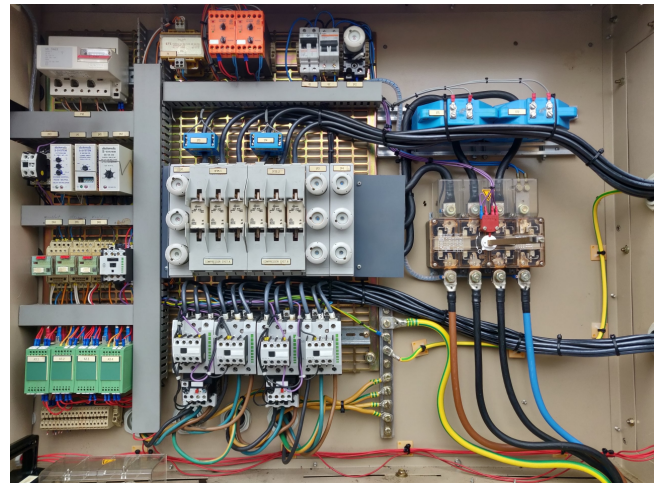
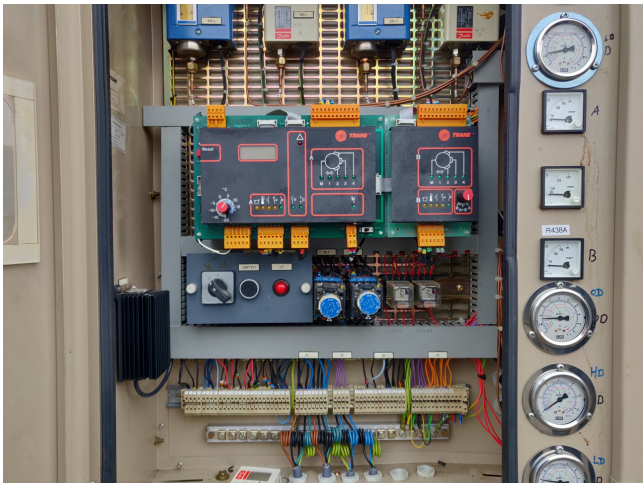
Производитель	Trane
Тип	CCUD 209
Тип продукта	Air Cooled Chiller (split-unit)
кВт	318,2
Мощность, тонн	90,47
Хладагент	Freon
Масса	2280
Stock	1

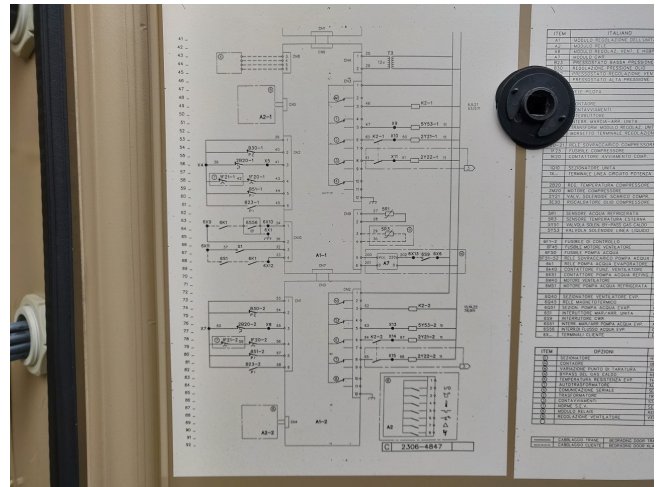
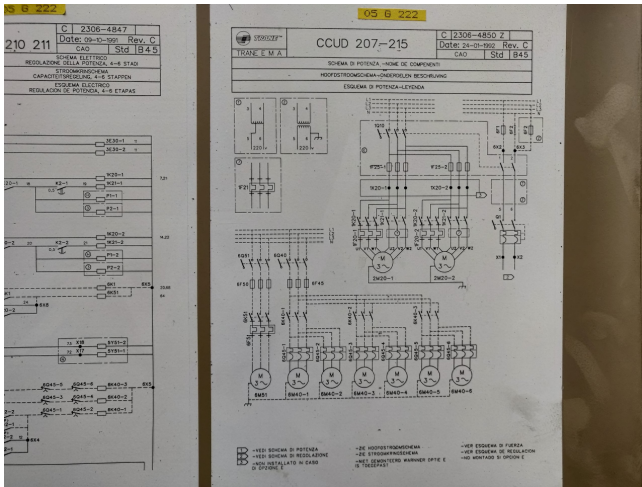


Description

Used Trane CCUD 209

Used but still in good condition air cooled chiller (split unit) type CCUD 209 (model CCUD for use with remote air cooled condenser) For all the other specs, see the picture of the manufacturer model plate or the attached pdf file (if available) "*Why choose for HOSBV? We're not only the largest used refrigeration specialist in Europe, but also, we deliver all equipment including an extensive test, warranty and industrial cleaning. Optional we can arrange shipment and export documents."





Electrical and general data (50 Hz)

Model	COWD 205 Z	206 Z	207 Z	208 R	209 R	210 R	211 R	212 E	214 R	215 E	
Nominal cooling capacity (l)	135.2	158.0	196.3	231.5	273.1	318.2	364.5	381.4	451.4	523.0	
Power input (l)	81.4	86.8	45.9	58.9	64.5	71.3	78.3	86.7	93.7	107.0	
No. of compressors/circuits	2	2	2	2	2	2	2	2	2	2	
Capacity steps	75-50-25	75-50-33	83-50-25	75-50-33	81-44-22	83-50-33	81-44-29	83-50-33	75-50-33	71-43-21	75-50-25
Rated load amps (2)	74	90	112	162	166	170	191	212	226	267	
Starting amps (3)	144	178	218	333	385	389	443	464	530	744	
Evaporator liquid content	1	114	103	102	88	88	164	164	140	188	
Condenser water content	1	22	20	29	32	45	45	52	52	60	
R22 operating charge	30	32	40	48	48	62	62	68	80	108	
Unit operating weight (4)	1300	1300	1450	1800	1950	2200	2200	2340	2950	3110	

(1) At +5°C ambient water leaving and 20°C condenser water leaving temperatures. Standard coil load conditions.
 (2) At 11.5/5.0 at 4 bar suction pressure, 23 bar discharge pressure.
 (3) At start winding start. One compressor at full load, the second one starting, the size 205R, 210 R and 214 E the compressor starting in the largest one of the two.
 (4) All capacity and weight data apply to the series COWD units with built-in water cooled condensers. For series CCUD units without condensers, for use with remote air cooled condensers refer to your nearest Sales Office for information.